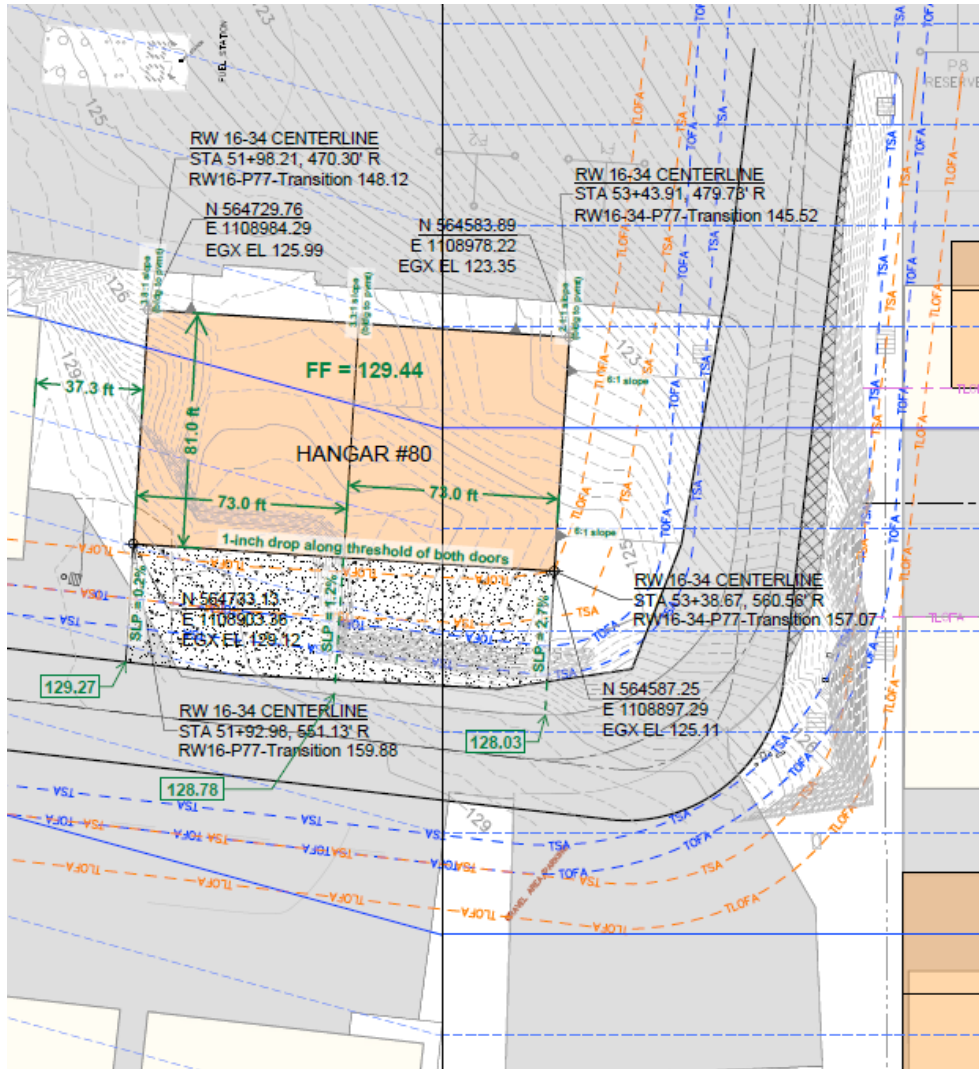
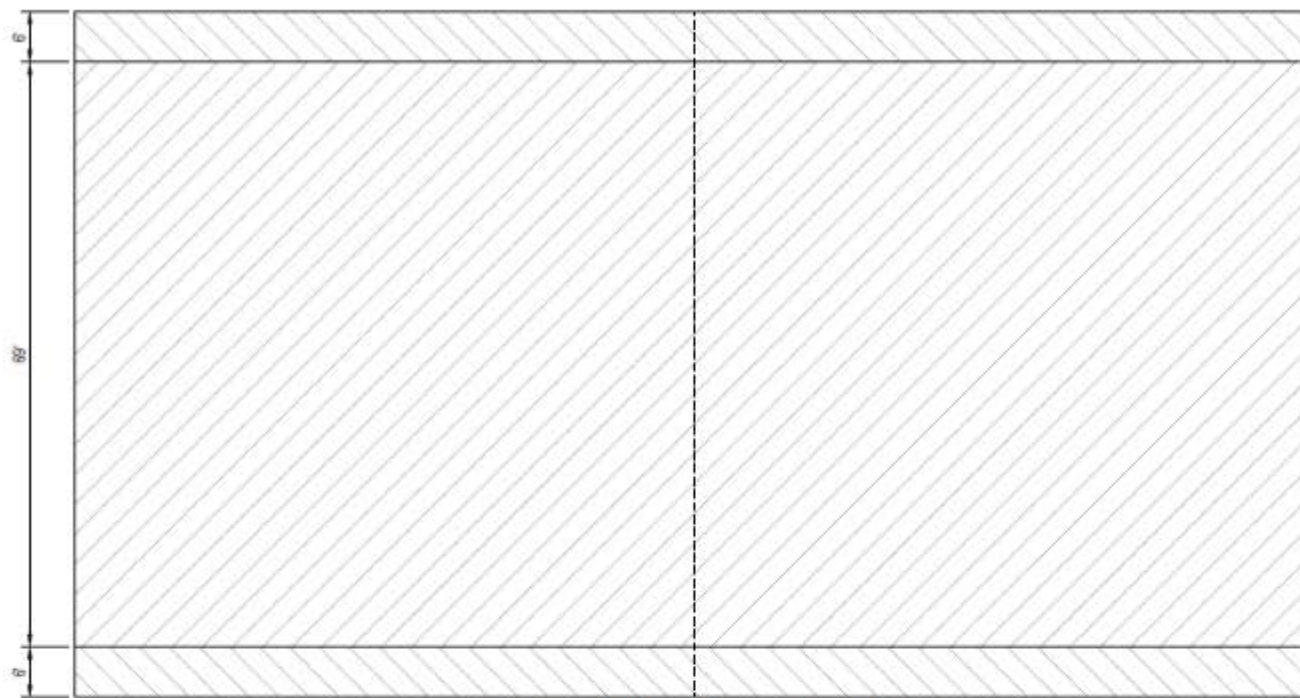


## KFHR Hangar 80 – two 73' X 81' units



The Port of Friday Harbor is seeking interest in leases for one or both 71' X 83' (65' X 16' doors) box hangars at Friday Harbor Regional Airport.

- New Construction - Available Spring of 2025.
- \$11.20/Sq. Ft./Yr.
- Up to 35% off in abated rate available depending on job retention or creation associated with the hangar use.
- Long-term leases will be considered for proposals intending tenant improvements.
- Hangars will have in slab rough in plumbing but finish plumbing and service connections would be tenant improvements.

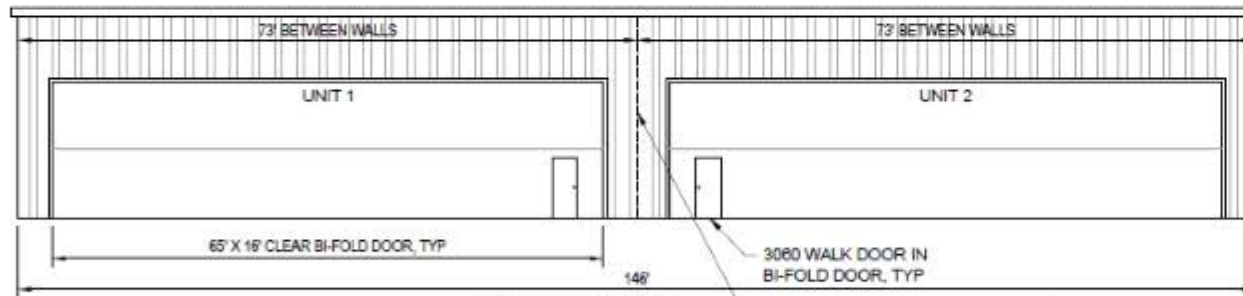


NEC CLASS 1, DIVISION 2 SPACE PLAN VIEW

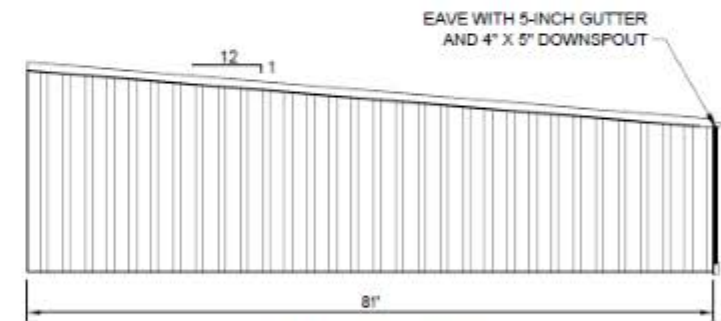


LEGEND

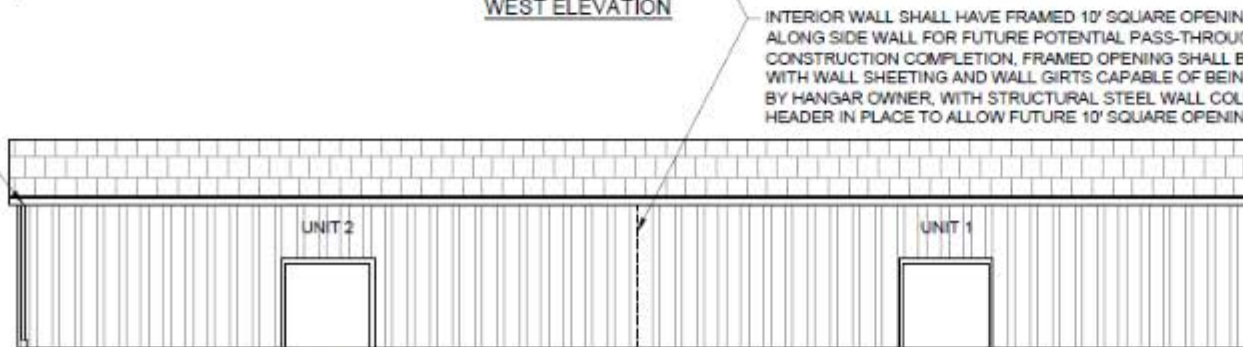
-  CLASS 1, DIVISION 2 SPACE WITHIN 18' OF HANGAR FINISHED FLOOR
-  CLASS 1, DIVISION 2 SPACE WITHIN 14' OF HANGAR FINISHED FLOOR



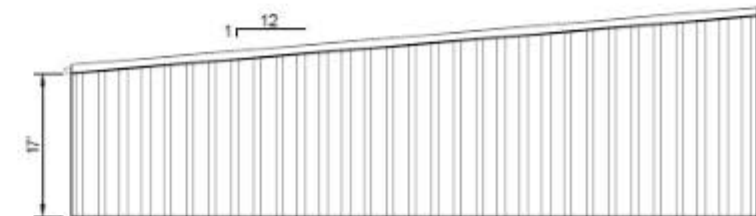
WEST ELEVATION



SOUTH ELEVATION



EAST ELEVATION



NORTH ELEVATION

EAVE WITH 5-INCH GUTTER AND 4' X 5' DOWNSPOUT

INTERIOR WALL SHALL HAVE FRAMED 10' SQUARE OPENING, CENTERED ALONG SIDE WALL FOR FUTURE POTENTIAL PASS-THROUGH. UPON CONSTRUCTION COMPLETION, FRAMED OPENING SHALL BE ENCLOSED WITH WALL SHEETING AND WALL GIRTS CAPABLE OF BEING REMOVED BY HANGAR OWNER, WITH STRUCTURAL STEEL WALL COLUMNS AND HEADER IN PLACE TO ALLOW FUTURE 10' SQUARE OPENING